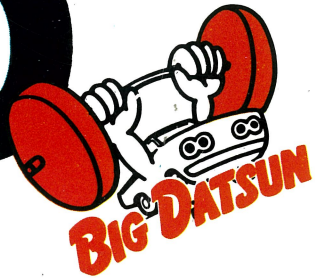


DATSUN PICKUP 1500



DATSUN PICKUP 1500 Standard Body



World's best selling multi-purpose pickup

The Pickup 1500 Series clearly establishes Datsun as the leader in the field. In rugged dependability, economical performance, power and safe handling ease. Over 40 years of outstanding tradition shines through. Four distinctive models provide you with an exciting choice—for fun and profit.

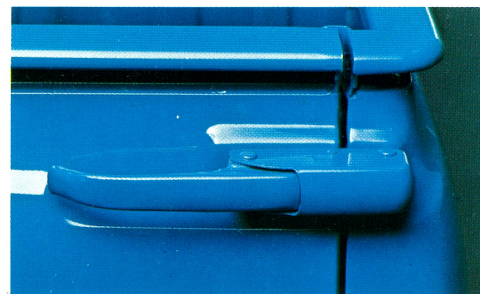
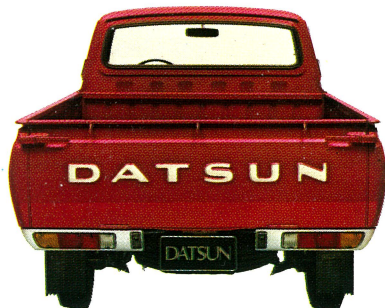
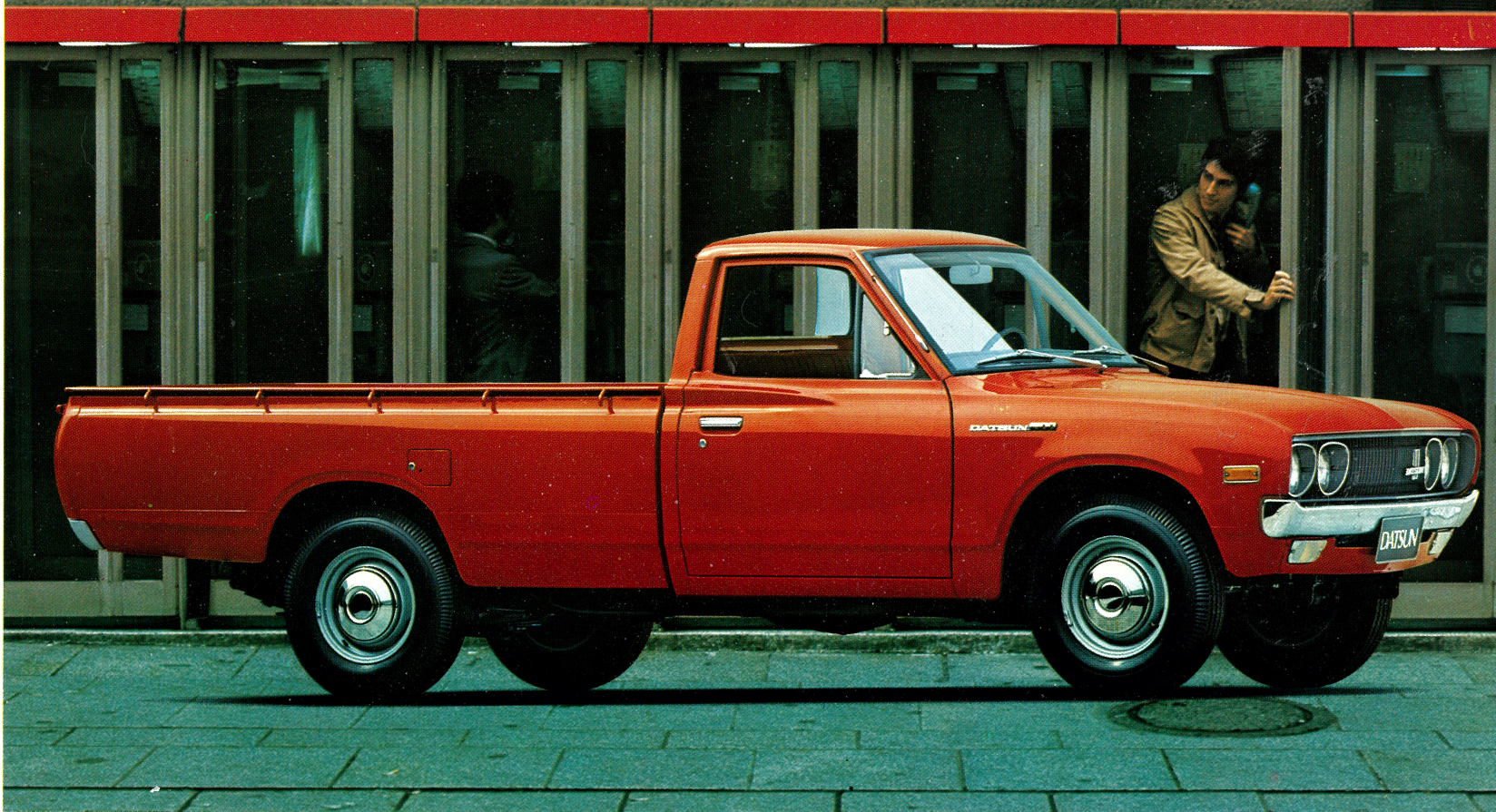
High utility

Introducing the Pickup 1500 Standard Body. It's right for handling any job under the sun. A tough 1500cc engine and smooth, quiet drive train easily handle any load you put in the spacious, all-steel, corrugated-floor load bed. Recirculating ball type steering and independent front suspensions make handling easier in tight spaces or on rough roads. Styling is clean and sporty—from the fresh grille lines to the easy-to-open tailgate. The cab is carefully designed for maximum comfort. You'll be proud to take this mighty performer anywhere.

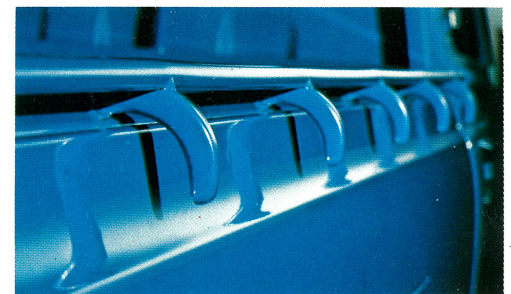
For bigger loads

When your cargo is large, bulky items, you'll find the Pickup 1500 Long Body an ideal choice. The load bed is 390 mm (15.3 in.) longer. That means you can safely load longer items and also more bulky cargo. All of the other outstanding features are the same as the Standard Body model, including the 1000 kg (2205 lb.) payload rating.

DATSUN PICKUP 1500 Long Body



Easy-to-open tailgate latch.



Rugged tie-down hooks.

DATSUN PICKUP 1500 Double Cabin

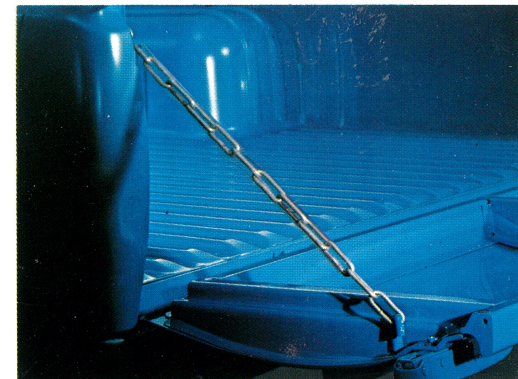


4-Door sedan convenience plus pickup utility

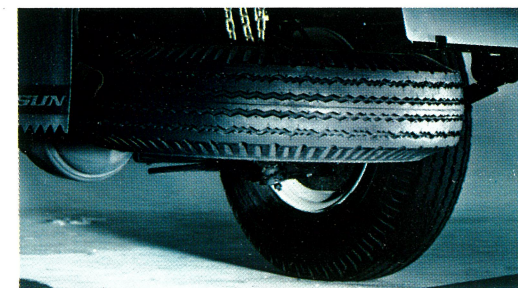
The versatile Pickup 1500 Double Cabin combines the best of 4-door sedan comfort and a hefty 500 kg (1100 lb.) payload capability. There is ample all-round roominess to comfortably seat five passengers.

The interior is tasteful and ruggedly functional. Deep cushioned seats, durable vinyl leather upholstery, padded dash and sunvisor, well-arranged controls and instruments make each ride safer, far more comfortable.

When the job is moving men and materials, you'll find the Pickup 1500 Double Cabin ideal. It's designed and built to perform the dual role fast and efficiently, under the most difficult conditions.

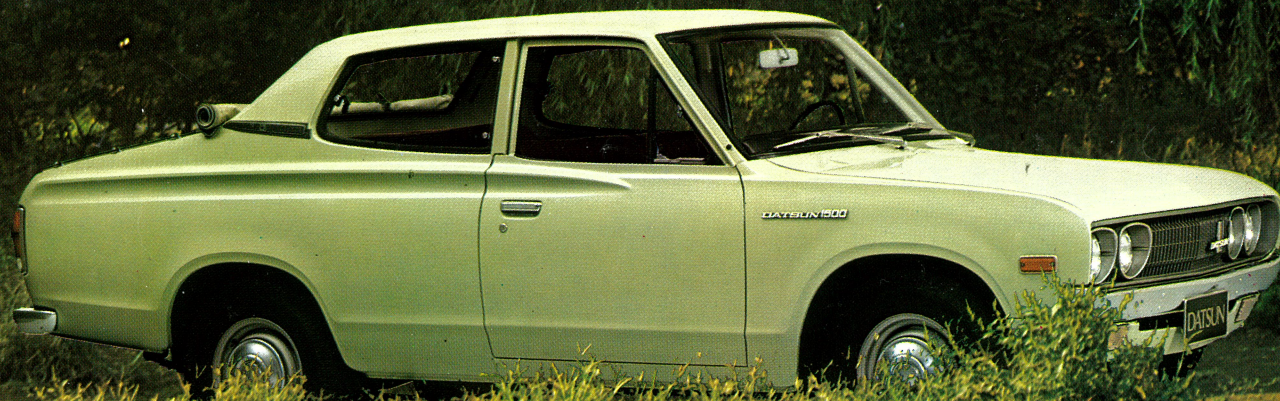


Strong, quieter tailgate chain.



Convenient spare tire location.

DATSUN PICKUP 1500 Double Seat



Passenger car comfort and big cargo payload

The Pickup 1500 Double Seat plays pleasure and work-a-day roles with equal ease. Whether you are going down to the beach, up to the mountains, just across town or cruising at high speed along a highway.

Up front, there's plenty of interior

room for the whole family. Five passengers have room to relax on deep-cushioned seats, surrounded by long-wearing vinyl leather upholstery and deluxe trimmings. Separate, adjustable front seats slide 140 mm (5.5 in.) forwards or backwards and the front passenger seat back bends forward for easy rear access.

The tonneau-covered load bed provides a low platform for easy loading/unloading of heavy items. Up to 400 kg (880 lb.) can be safely carried.





Radio and heater shown are optional.

Driving ease

Everyone wants a vehicle they can be confident in and enjoy driving. That's why so many people—from businessmen, modern housewives and sportsmen to ranch owners—own a Datsun pickup. Sometimes even two or three.

The Pickup 1500 Series makes it even easier to love Datsun. These models come out on top every time—anyway you care to size them up. All are built to be used and

abused. Improved driving ease has also been built-in, so you can relax while putting these all-round performers to the test.

How can Datsun offer so much?

The secret is 40 years of dedicated effort. Now, let's take a closer look at exactly how much more driving enjoyment you receive as a happy result.

Compared to cab-over-the-engine type pickups, Datsun passengers ride in a very relaxed sitting position.

On long drives this advantage reduces fatigue and cramped muscles.

Comforts

Inside you'll be pleased to discover real sedan type comfort. The rule holds true for all models.

The driver has excellent visibility in all directions.

Reduced-glare instruments and centrally arranged controls on the sporty, padded dashboard add an extra measure of safe convenience.

There is plenty of head and leg room for all passengers. Everyone rides on deep-cushioned seats, upholstered in long-wearing vinyl leather.

Four-door access makes the Double



Double Cabin

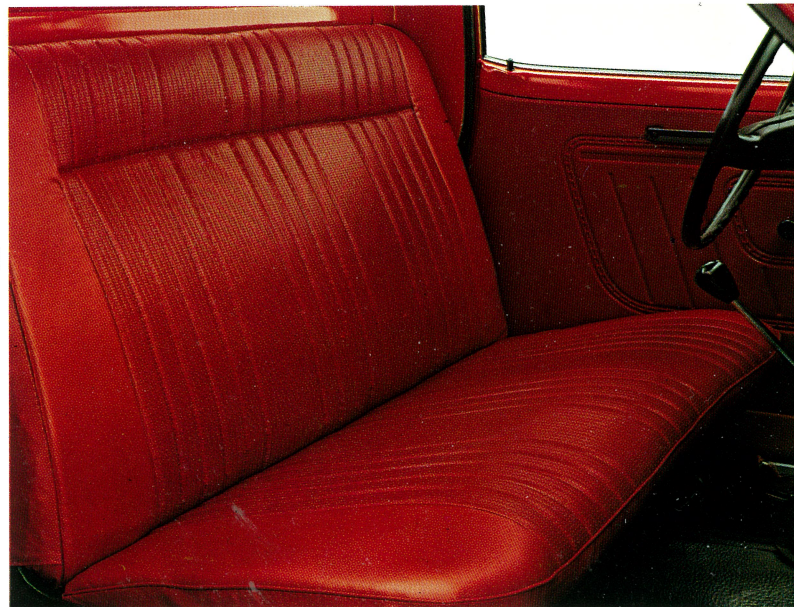
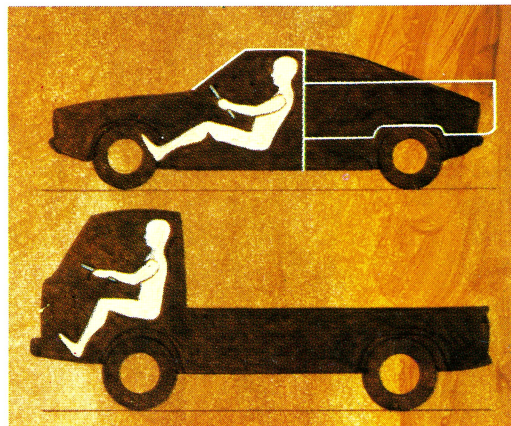


Double Seat

Cabin particularly popular with passengers. The Double Seat also assures easy rear access and comfort on long rides because the front seat adjusts a full 140 mm(5.5 in.)

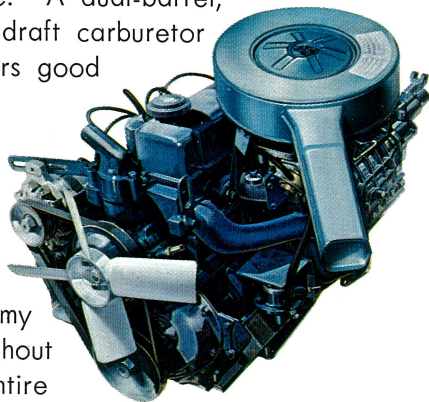
Flow-through ventilation keeps interior air fresh even when all windows are shut tight.

On long or short trips, everyone arrives without fatigue. Sedan type comfort puts the Datsun Pickup 1500 Series in a class by itself.



Durability

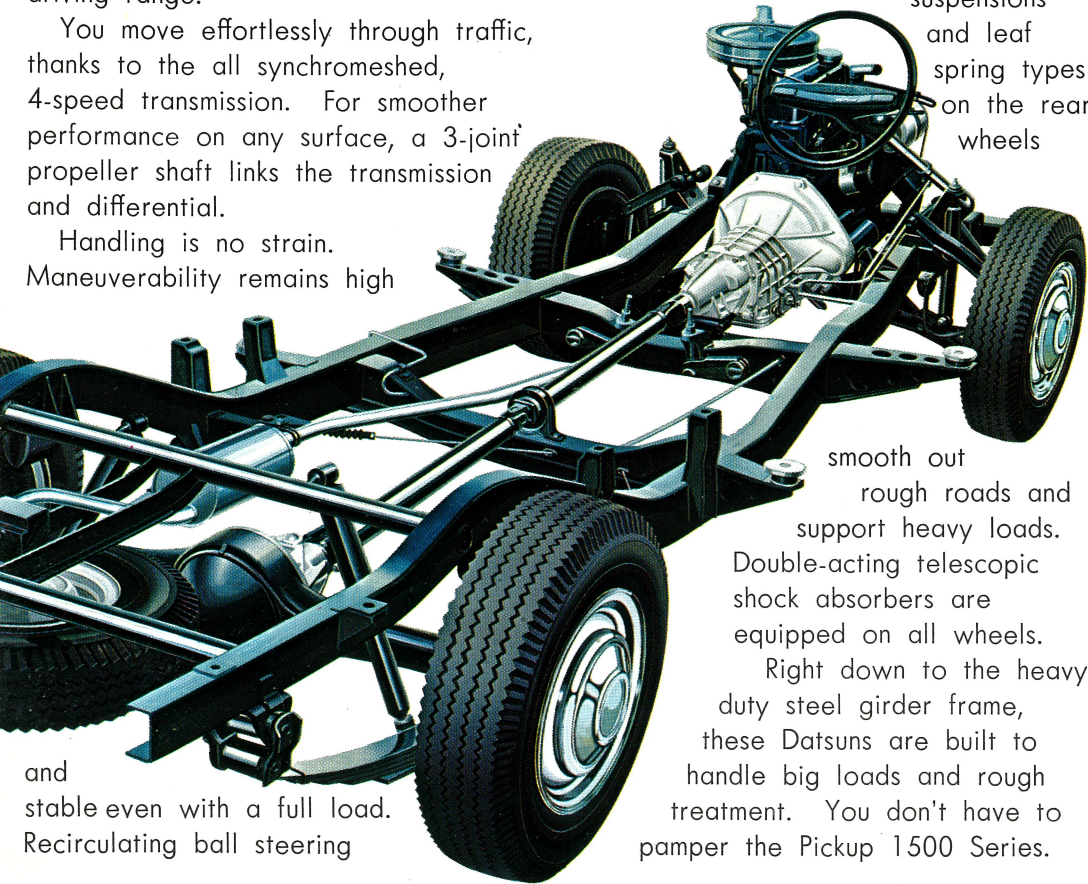
Beneath the gently sloping hood, purrs a mighty 1500 cc OHV engine. A dual-barrel, down-draft carburetor delivers good fuel



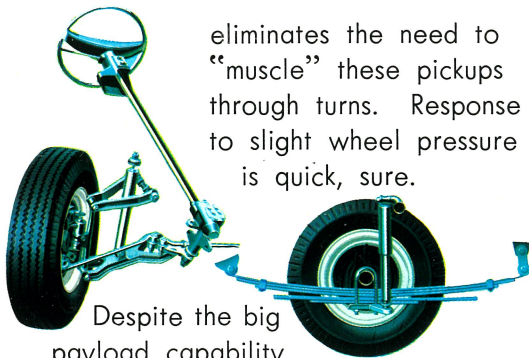
economy throughout the entire driving range.

You move effortlessly through traffic, thanks to the all synchromeshed, 4-speed transmission. For smoother performance on any surface, a 3-joint propeller shaft links the transmission and differential.

Handling is no strain. Maneuverability remains high



and stable even with a full load. Recirculating ball steering



Despite the big payload capability, Pickup 1500 models (except the Long Body and Double Cabin which require 5.6 m or 18.4 ft.) possess a tight 5.2 m or 17.1 ft. turning radius.

Independent front torsion bar suspensions and leaf spring types on the rear wheels

smooth out rough roads and support heavy loads.

Double-acting telescopic shock absorbers are equipped on all wheels.

Right down to the heavy duty steel girder frame, these Datsuns are built to handle big loads and rough treatment. You don't have to pamper the Pickup 1500 Series.

eliminates the need to "muscle" these pickups through turns. Response to slight wheel pressure is quick, sure.

Safety

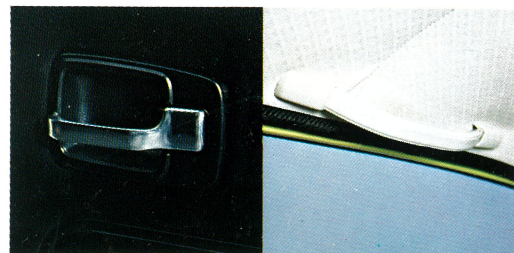
Sit behind the wheel. Right away you'll notice the wide-sweep wipers, reduced-glare instruments, padded dash and sunvisor. However, important standard safety features you can't see protect you and passengers in other ways.

We are talking about the special brake system. A tandem master cylinder works together with the uni-servo front brakes and duo-servo rear brakes to assure quick, sure stops. The tandem master cylinder separates the front and rear brakes into independent systems so a failure in one will not affect the other. Brake power assist (Master Vac) is optional*.

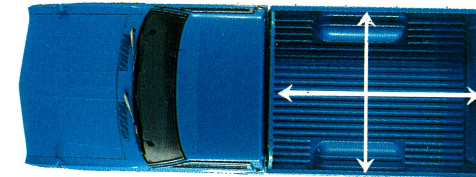
As we mentioned earlier, everyone likes a pickup to inspire them with confidence and driving enjoyment. The Datsun Pickup 1500 Series does both superbly.

As we mentioned earlier, everyone likes a pickup to inspire them with confidence and driving enjoyment. The Datsun Pickup 1500 Series does both superbly.

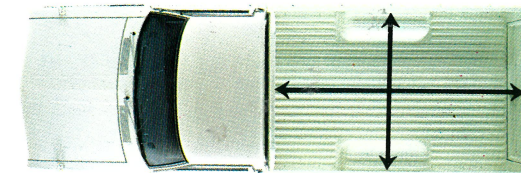
* Not available on particular models. See the back page for details.



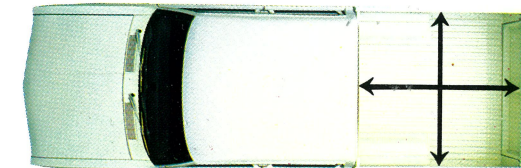
Safety-shaped door handle. Handy assist strap (option).



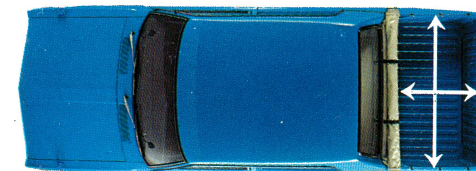
Standard Body—1860 mm (73.2 in.) × 1430 mm (56.2 in.)



Long Body—2250 mm (88.5 in.) × 1430 mm (56.2 in.)



Double Cabin—1510 mm (59.5 in.) × 1430 mm (56.2 in.)



Double Seat—860 mm (33.8 in.) × 1330 mm (52.3 in.)

Big payload

The spacious load beds are all steel, with a corrugated floor and tie-down hooks (except on Double Seat). For easier loading/unloading, beds are low—about 70 cm (28 in.) above the ground.

DATSUN PICKUP 1500 SPECIFICATIONS

MODELS:	Standard Body	Long Body	Double Cabin	Double Seat
TYPES:	N(L) 620(T) (U)	GN(L) 620(T) (U)	51ZGN(L)620(T)(U)	UN(L) 620(U)

DIMENSIONS, WEIGHT and PERFORMANCE:

Overall length	mm (in)	4,300 (169.2)	4,690 (184.6)	←	4,350 (171.2)
Overall width	mm (in)	1,590 (62.5)	←	←	←
Overall height	mm (in)	1,545 (60.8)	1,540 (60.6)	1,610 (63.4)	1,515 (59.6)
Wheelbase	mm (in)	2,545 (100.1)	2,785 (109.6)	←	2,545 (100.1)
Tread, front	mm (in)	1,260 (49.6)	←	←	←
Tread, rear	mm (in)	1,290 (50.8)	←	←	←
Min. road clearance	mm (in)	200 (7.8)	←	←	185 (7.2)
Load bed length	mm (in)	1,860 (73.2)	2,250 (88.5)	1,510 (59.5)	860 (33.8)
Load bed width	mm (in)	1,430 (56.2)	←	←	1,330 (52.3)
Load bed height	mm (in)	400 (15.7)	←	←	490 (19.2)
Payload	kg (lb)	1,000 (2,205)	←	500 (1,100)	400 (880)
Curb weight	kg (lb)	1,020 (2,249)	1,050 (2,315)	1,095 (2,415)	1,035 (2,282)
Seating capacity	persons	2	←	5	←
Max. speed	km/h (mph)	135 (83.8)	←	←	140 (86.9)
Min. turning radius	m (ft)	5.2 (17.1)	5.6 (18.4)	←	5.2 (17.1)
(curb to curb)					
Max. climbing ability	tan θ	0.30	←	0.34	0.38
Fuel tank capacity	l (US gal)	45 (11.9)	←	←	40 (10.5)

ENGINE: Datsun J15 gasoline engine. Water-cooled. 4-cycle, 4 cylinders, in line, OHV. Bore×stroke 78×77.6mm (3.07×3.06 in). Displacement 1,483 cc (90.5 cu in). Maximum output 77 bhp at 5,200 rpm (SAE). Maximum torque 12.0 kg-m (86.8 lb-ft) at 3,200 rpm (SAE). Compression ratio 8.3 to 1.

FUEL SYSTEM: Dual-barrel down-draft carburetor. Paper element air cleaner.

ELECTRICS: 12V battery. 35A alternator.

CLUTCH: Single dry plate with diaphragm spring.

Datsun pickups popular worldwide

People around the world drive Datsun pickup trucks. Some for earning a living, others just for fun. Exceptional ruggedness, handling ease and styling are important reasons behind Datsun's wide popularity.

Since the first Datsun pickup was produced, over 2,000,000 have been sold to satisfied customers in more than 85 countries. In the U.S., for instance, Datsun pickups have remained



the top imported pickup truck for the past decade (1965-1974).

Join the happy people who live better with Datsun.

TRANSMISSION: All synchromeshed on forward gears. Gear ratios 1st 4.243, 2nd 2.558, 3rd 1.589, 4th 1.000, reverse 4.367 to 1. Final gear ratio 4.625 (Double Seat 4.375) to 1.

FRONT SUSPENSION: Independent torsion bar with telescopic shock absorbers.

REAR SUSPENSION and AXLE: Semi-elliptic leaf springs with telescopic shock absorbers. Semi-floating axle.

BRAKES: Dual safety circuit with tandem master cylinder. Uni-servo type, front. Duo-servo type, rear. Parking brake mechanically operated on rear wheels.

WHEELS and TIRES: 4 $\frac{1}{2}$ J-14 road wheels. 6.00-14-6PRLT, front. 6.00-14-8PRLT, rear.

Double Seat: 5.50-14-6PRLT, front. 5.50-14-8PRLT, rear.

STEERING: Recirculating ball type gearbox. Gear ratio 19.8 to 1.

BODY: All steel cab with full vinyl upholstery. Safety glass all round. All steel rear load bed with horizontally hinged tailgate. Two-stage door hinges. Welded ladder-lattice chassis.

INSTRUMENTS and CONTROLS: Speedometer with odometer. Fuel gauge. Water temperature gauge. Warning lamps to indicate low oil pressure, ignition, main beam and parking brake working. A steering column stalk operates turn indicators, dipped and main beams for the four headlamps.

STANDARD EQUIPMENT: Dome lamp. Backup lamps. Two-speed windshield wipers. Electric washer. Breakaway inside rearview mirror. Padded instrument panel. Glove box. Package tray. Ash tray. Driver's sunvisor. Floor mat. Front bumper. Wheel caps. Mud flaps (except on Double Seat). Lockable gas filler lid. Tonneau cover (Double Seat only).

OPTIONAL EQUIPMENT:

○ Outside rearview mirrors ○ Armrest ○ Headrests (only on Double Seat) ○ Assist strap for front passenger ○ Seat belts ○ Lockable glove box ○ Foamed vinyl floor mat** ○ Sunvisor for front passenger ○ Dome lamp switch on driver's door ○ Pushbutton AM radio and antenna ○ Cigarette lighter ○ Clock ○ Heater ○ Dual-tone horn ○ Bright moldings on windshield and drip rails ○ Steering lock* ○ Brake power assist* ○ Stabilizer** ○ Cab guard frame** ○ Rear bumper**

* not available on LHD column shift models

** not available on Double Seat

** standard on Double Seat

** not available on RHD floor shift models



Extras shown not available from NISSAN.

Nissan Motor Co., Ltd. reserves the right to modify specifications or models without notice. The colours of the actual vehicle may differ slightly from those in this brochure. The specifications vary for different countries depending on local market conditions. Please consult your local dealer for details.